

**brentview**  
developments



# SKAHA LANDING

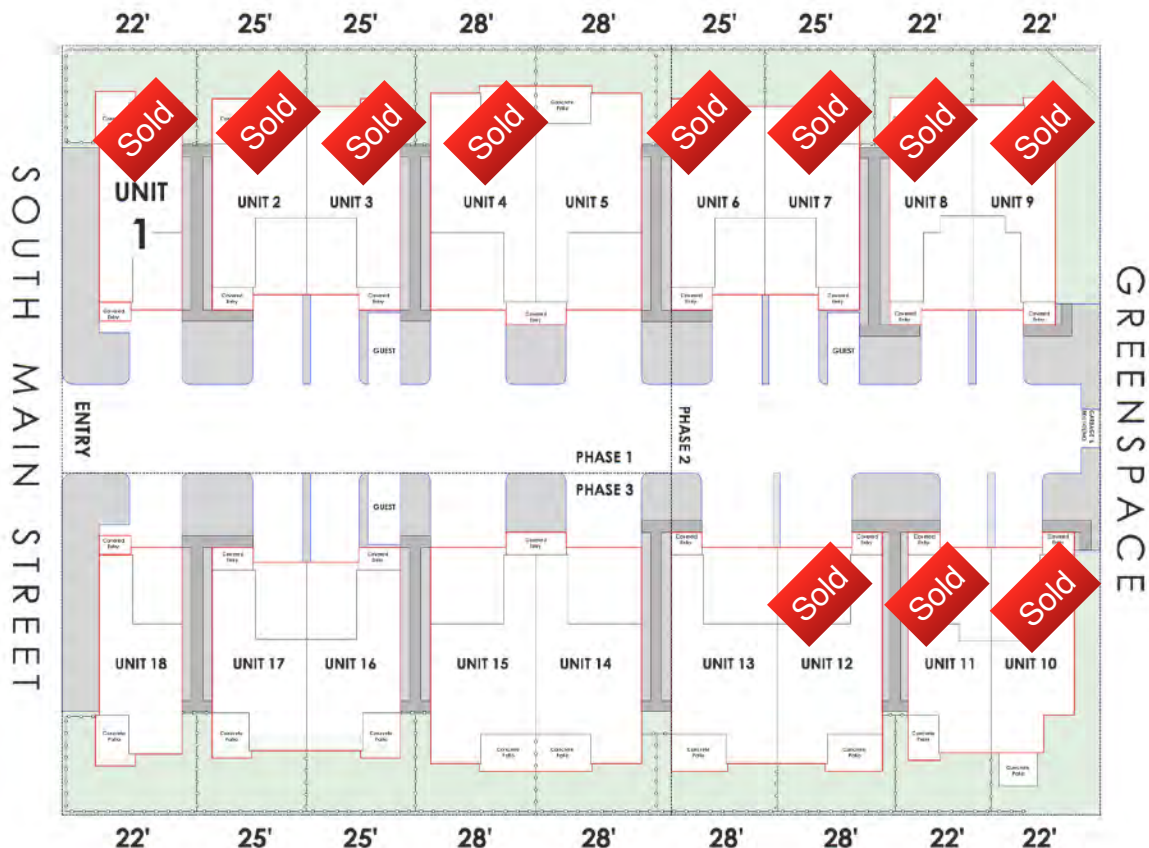
— Your Place to Call Home —

**3402 South Main Street**  
Penticton, BC

2 Detached Homes  
16 Attached Homes  
1872 Sq Ft - 2484 Sq Ft

**Starting from \$414,900**

For more information contact  
Rod - 250.490.1119  
[rod@brentview.ca](mailto:rod@brentview.ca)  
Cory - 250.809.7921  
[cory@brentview.ca](mailto:cory@brentview.ca)

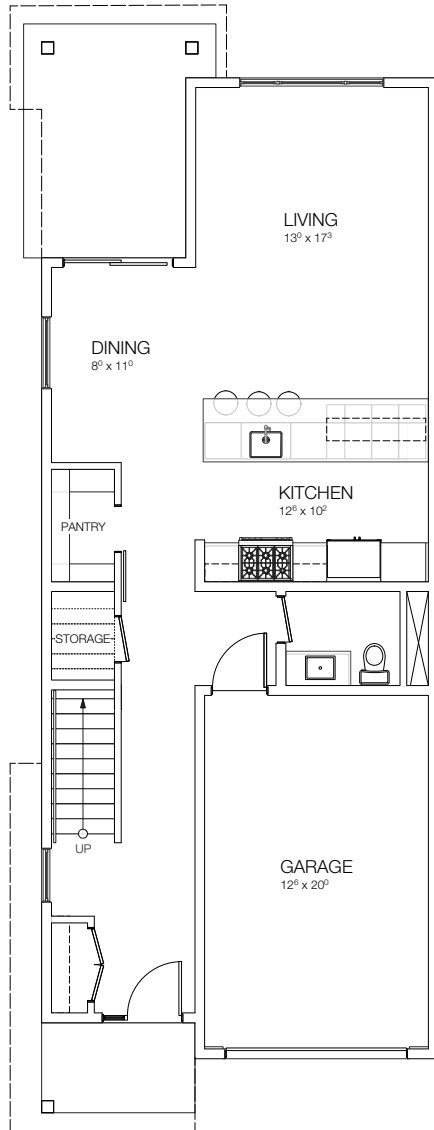


**brentview**  
developments

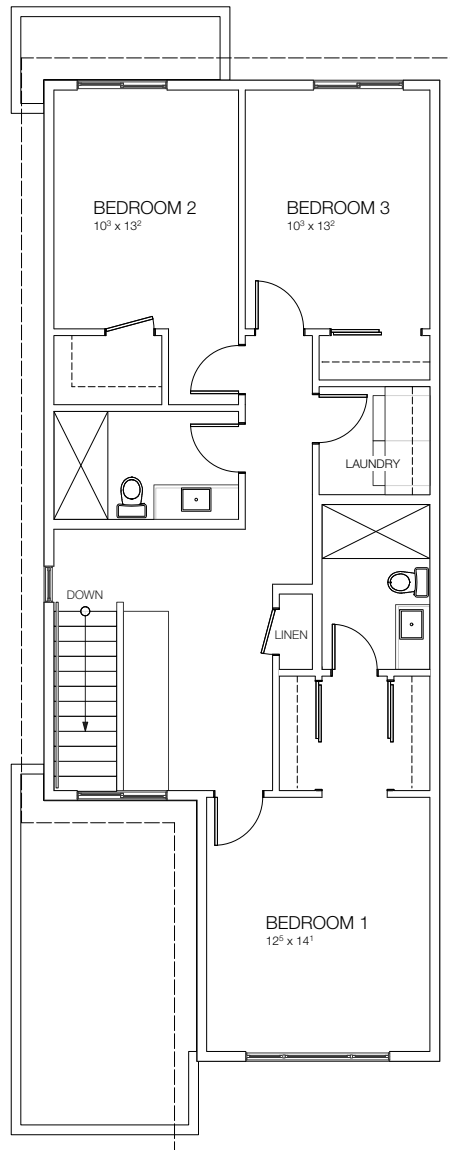


**SKAHA LANDING**

— Your Place to Call Home —



**MAIN FLOOR PLAN**  
796 SQFT



**UPPER FLOOR PLAN**  
1076 SQFT

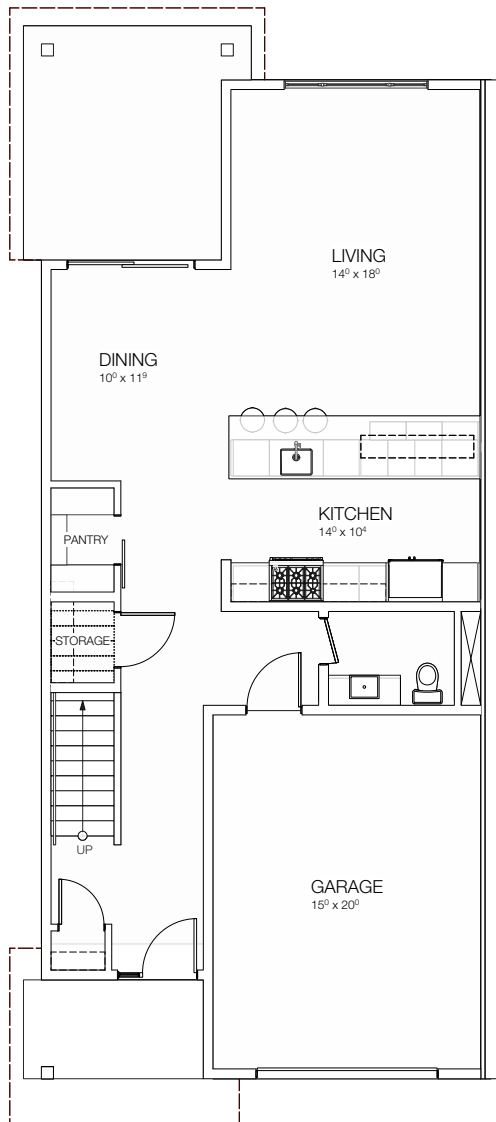
**22 FT WIDE**  
3402 SOUTH MAIN STREET  
PENTICTON, BC

**brentview**  
developments

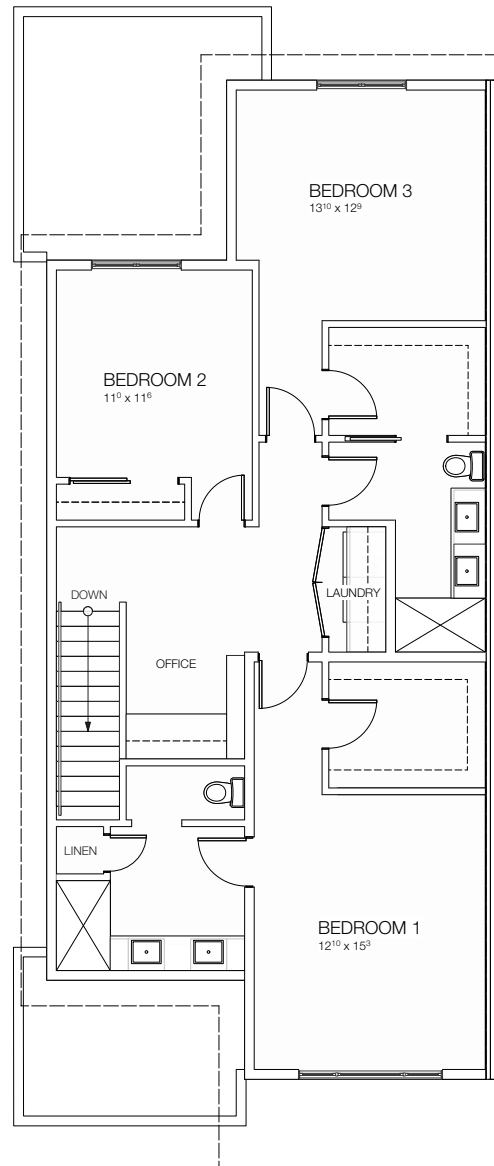


**SKAHA LANDING**

— Your Place to Call Home —



**MAIN FLOOR PLAN**  
940 SQFT



**UPPER FLOOR PLAN**  
1220 SQFT

**25 FT WIDE**

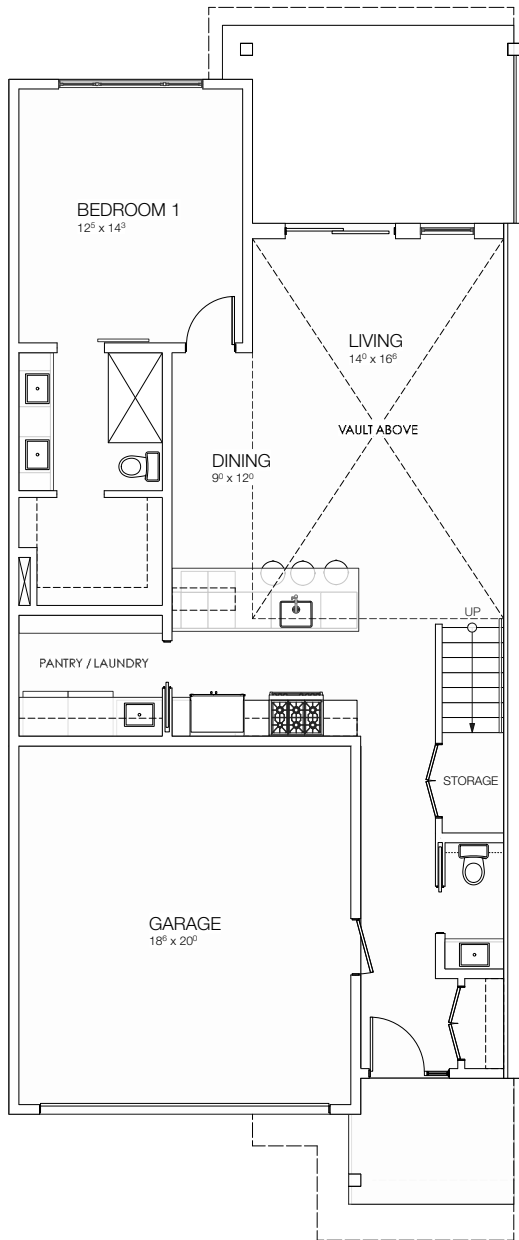
3402 SOUTH MAIN STREET  
PENTICTON, BC

**brentview**  
developments

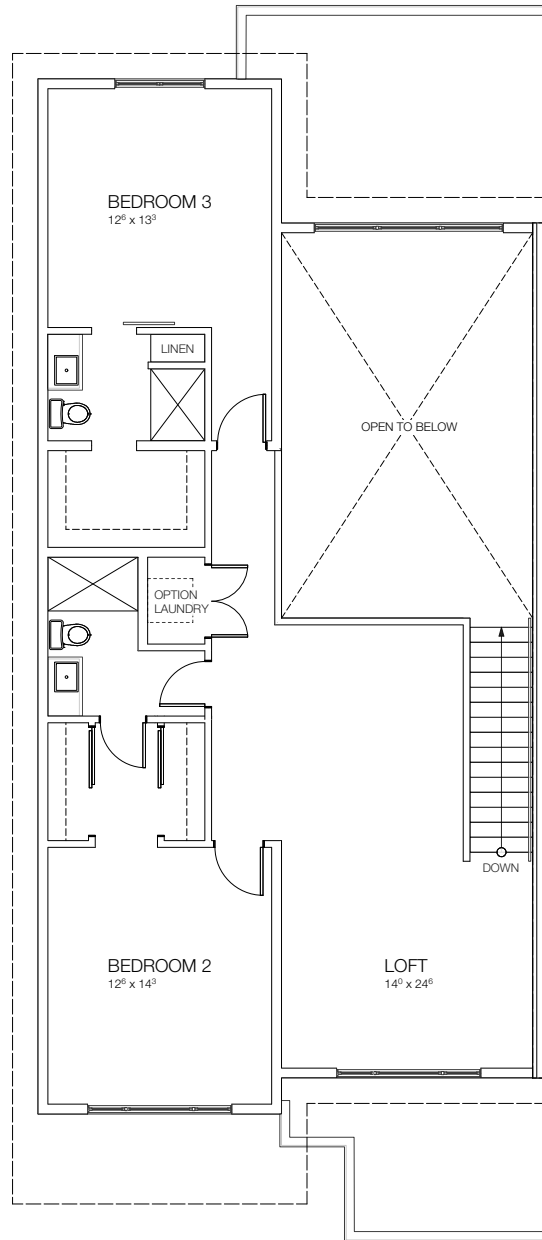


**SKAHA LANDING**

— Your Place to Call Home —



**MAIN FLOOR PLAN**  
1080 SQFT



**UPPER FLOOR PLAN**  
1095 SQFT

**28 FT WIDE**  
3402 SOUTH MAIN STREET  
PENTICTON, BC